

# Pathrider™ 140 XL

ENGINEERED FOR  
POWERFUL PERFORMANCE  
AND EXCEPTIONAL STYLE

## PATHRIDER™ 140 XL

Bristling with high performance features like full suspension and a hydraulic sealed brake system, the **Pathrider™ 140 XL** is a powerful blend of power and precision. The Pathrider 140 XL is equipped with sleek aggressive style and a wealth of standard luxury touches including a wraparound easy drive tiller and LED lighting, making it the ultimate outdoor scooter.



**Pride**<sup>®</sup>  
Mobility Products  
Australia Pty. Ltd.  
— LIVE YOUR BEST —

(Tel) 03 9706 4611 • (Fax) 03 9706 4622 • [www.pridemobility.com](http://www.pridemobility.com)

# Pathrider™ 140 XL

Weight capacity:	181 kg (400 lbs.)
Maximum speed <sup>1</sup> :	Up to 15 km/h (9.32 mph)
Ground clearance <sup>2</sup> :	13.33 cm (5.25") at shroud
Turning radius:	210.8 cm (83") right/ 208.3 cm (82") left
Overall length <sup>2</sup> :	142.8 cm (56.25")
Overall width <sup>2</sup> :	69.2 cm (27.25")
Front tyres:	10 cm x 33 cm (4" x 13") pneumatic
Rear tyres:	10 cm x 33 cm (4" x 13") pneumatic
Seat-to-deck:	53 cm (21")
Seat-to-ground:	72.39 cm – 68.58 cm (28.5" – 27")
Suspension:	Front & rear
Range per charge <sup>1,4</sup> :	Up to 35 km (21.7 miles) (with 75 AH batteries)
Maximum obstacle climbing ability:	12 cm (4.72")
Total weight without batteries:	117.70 kg (259.5 lbs.)
Heaviest piece when disassembled:	Main frame: 93.21 kg (205.5 lbs.)
Standard seating:	Type: Pillow top Weight: 21.77 kg (48 lbs.) Material: Black Vinyl Dimensions: width – 49.5 cm (19.5") (overall width) depth – 44.5 cm (17.5") (effective depth)
Drive system:	Rear-wheel drive, sealed transaxle, 24-volt DC motor
Dual braking system:	Regenerative and electromechanical (hand brake)
Battery requirements <sup>3</sup> :	Two 12-volt, deep cycle Size: 70 AH (gel) Weight: <b>70 AH:</b> 25 kg (55 lbs.) each
Battery charger:	8-amp, off-board
Warranty:	2-year limited

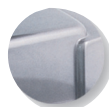
## Colours:



Candy Apple Red



Yellow



Silver

## Features

- Full suspension for optimum handling
- Sealed hydraulic brakes
- Large 33 cm (13") pneumatic tyres for excellent outdoor performance
- Full lighting package including directional signals and headlight
- Easy drive tiller with wraparound handles
- Easily accessible tie down points (for transport of unoccupied scooter)
- Rear view mirror standard
- Front shield standard
- Pillow-top seat

## Options

- Double crutch holder
- Oxygen tank holder
- Rear basket
- Additional rear view mirror

<sup>1</sup> Varies with user weight, terrain type, battery amp-hour (AH), battery charge, battery condition and tyre condition.

<sup>2</sup> Due to manufacturing tolerances and continual product improvement, this specification can be subject to a variance of (+ or - 3%).

<sup>3</sup> AGM or Gel-Cell type required.

<sup>4</sup> Tested in accordance with ANSI/RESNA, WC Vol2, section 4 & ISO 7176-4 standards. Results derived from theoretical calculations based on battery specifications and drive system performance test conducted at maximum weight capacity.

NOTE: All specifications subject to change without notice.

The information contained herein is correct at the time of publication; due to Pride's commitment to constant improvement and development, we reserve the right to alter specifications without prior notice.

Theoretical range is calculated under test conditions in accordance with European standards. Actual range in normal use will depend on many factors, including the condition of the vehicle and its batteries, the weight of the driver, correct tyre pressures, ambient temperature, and the gradient and surface of the road or pavement.



Quality Endorsed Company  
ISO 9001 QEC20029  
SAI Global

**Pride**  
Mobility Products  
Australia Pty. Ltd.  
— LIVE YOUR BEST —

21 Healey Rd., Dandenong, Victoria 3175  
(Tel) 03 9706 4611 • (Fax) 03 9706 4622 • [www.pridemobility.com.au](http://www.pridemobility.com.au)

ACN 088 609 661 ABN 66 088 609 661

**PRIDE**  
PERFORMANCE MOBILITY  
— LIVE YOUR BEST —